

MONTHLY MEMBERSHIP PROGRESS REPORT

LOCATION WEST VIRGINIA

District 29 I

Results as of: 10/31/2020

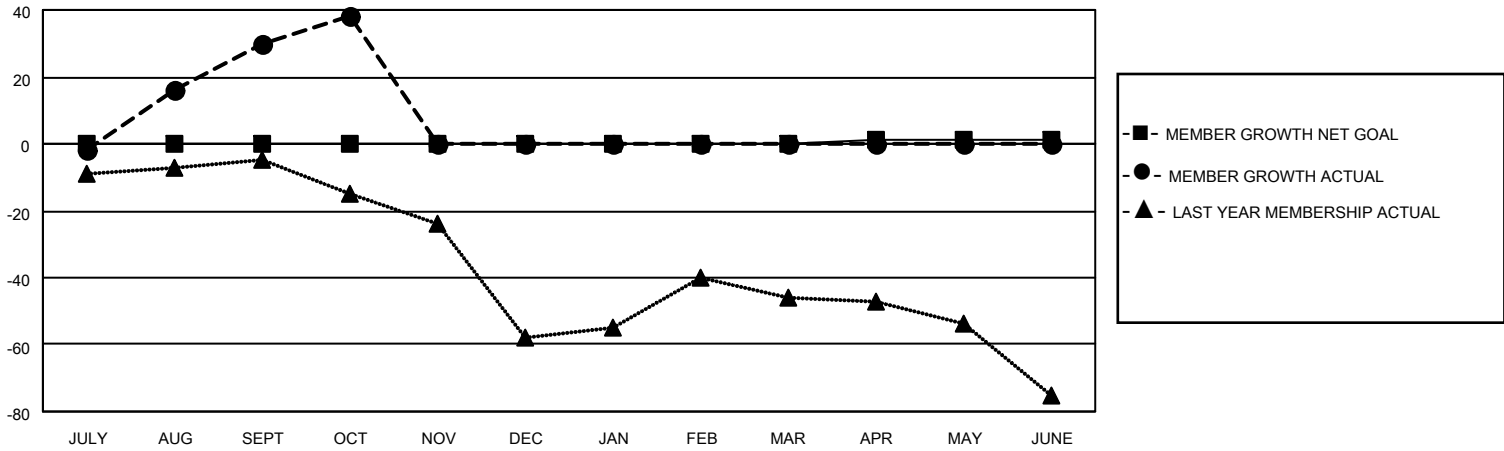
Clubs			
RESULTS FOR 2020-2021			
QUARTER	NEW CLUB GOAL	NEW CLUBS	DROPPED CLUBS
JULY/AUG/SEPT	0	0	0
OCT/NOV/DEC	0	0	0
JAN/FEB/MAR	1	0	0
APR/MAY/JUNE	0	0	0

Members			
RESULTS FOR 2020-2021			
QUARTER	MEMBER GROWTH NET GOAL	MEMBER GROWTH ACTUAL	DROPPED MEMBERS ACTUAL (including transfers)
JULY/AUG/SEPT	0	46	15
OCT/NOV/DEC	0	10	2
JAN/FEB/MAR	0	0	0
APR/MAY/JUNE	1	0	0

GOALS AND ACTUAL NEW CLUBS CUMULATIVE



GOALS AND ACTUAL MEMBERS CUMULATIVE



DROPPED CLUBS: 0	15 CLUBS OF 56 ADDED 1 OR MORE NEW MEMBERS	<u>GENDER DISTRIBUTION</u>
<u>DROPPED MEMBERS</u>	CLICK HERE FOR CUMULATIVE MEMBERSHIP DATA	MALE 1,035 (66.73%)
DECEASED 9		FEMALE 516 (33.27%)
CLUB CANCELLED 0		TOTAL FAMILY UNIT MEMBERS 487
OTHER 8		FAMILY MEMBERS PAYING HALF DUES 249
TOTAL 17		